

# REAL-TIME IP INSTALLATIONS



**DOMESTIC PRODUCTIONS**  
New York, USA

**DESCRIPTION**  
AMV's IP Mobile Unit, "Eclipse" has been used to produce NBC Macy's Thanksgiving Day Parade, Global Citizen concert, and Dick Clark's New Year's Rockin' Eve

**IP TECHNOLOGY**  
SMPTe ST 2110  
SMPTe ST 2022-7

**IP BENEFITS**  
Less Equipment, more production space  
More available equipment resources  
Everything lives in the router  
More efficient set-up and strike on show site due to reduced cabling

**ON AIR DATE**  
July 2021



**ASSOCIATED PRESS**  
New York, USA

**DESCRIPTION**  
New headquarters building, with hybrid HD-SDI/IP infrastructure for studios, newsroom and MCR

**IP TECHNOLOGY**  
SMPTe ST 2022-6  
SMPTe ST 2022-7

**IP BENEFITS**  
Ease of expansion  
Test case opportunity  
Long cable runs

**ON AIR DATE**  
March 2017



**BBC WALES, CENTRAL SQUARE**  
Cardiff, Wales, UK

**DESCRIPTION**  
New Headquarters Building  
3 TV Studios  
Multiple Radio Studios  
Multiple Edit Suites  
Flexible Media Areas

**IP TECHNOLOGY**  
SMPTe ST 2110  
AMWA NMOS

**IP BENEFITS**  
Future Proofing  
Scale  
Format Flexibility

**ON AIR DATE**  
Q4 2019



**BROADCASTING CENTER EUROPE**  
Luxembourg

**DESCRIPTION**  
Move to new premises: RTL City  
IP used for signal routing and distribution

**IP TECHNOLOGY**  
SMPTe ST 2022-7  
AES67  
PTPv2 and PTPv1  
Upgradable to SMPTe ST 2110

**IP BENEFITS**  
Format Agnostic (1080p, 4K)  
Flexibility, Redundancy, Reliability  
Innovation

**ON AIR DATE**  
April 2017 (Studio Production)  
June 2017 (Playback Facility)



**BROADCAST ANYWHERE TIMELINE**  
London, UK

**DESCRIPTION**  
Timeline's triple expanding, IP 4K HDR outside broadcast truck delivers large scale complex OBs simultaneously in uncompressed 4K UHD HDR and 4K UHD SDR

**IP TECHNOLOGY**  
SMPTe ST 2110 Live Production  
SMPTe ST 2022-6, ST 2022-7 and ST 2059

**IP BENEFITS**  
Enables large scale complex OBs  
Removes traditional SDI matrix limitations

**ON AIR DATE**  
May 2017



**CANAL+ GROUP**  
Boulogne-Billancourt, France

**DESCRIPTION**  
Live shows broadcast production center: 4 studios, 2 galleries and 30 seats of postproduction

**IP TECHNOLOGY**  
SMPTe ST 2022-6  
Moving to SMPTe ST 2022-7 and AES67  
Introducing SMPTe ST 2059

**IP BENEFITS**  
Quicker to setup new shows  
Easier to chain shows back to back

**ON AIR DATE**  
November 2016



**CBC RADIO-CANADA**  
Montreal, Quebec, Canada

**DESCRIPTION**  
The new Maison De Radio Canada in Montreal is a SMPTe ST-2110 based facility that will serve as the production, playback and distribution hub for French Television, Radio and Web services of CBC/Radio-Canada, Canada's national broadcaster.

**IP TECHNOLOGY**  
SMPTe ST 2110

**IP BENEFITS**  
Reduced cabling "out of rack" and "room to room" connectivity.  
IP enables Software and COTS server hardware  
Playback area is projected to be 100% COTS software Format independence/ Future proof IP infrastructure  
Combination of Audio for Radio, Audio for TV, HD, and UHD 4K signals

**ON AIR DATE**  
Rehearsals Fall 2019  
Transfer of operation starting early 2020



**CCTV**  
Beijing, China

**DESCRIPTION**  
First Live Studio for UHD program in CCTV new building.

**IP TECHNOLOGY**  
SMPTe ST 2022-6/7  
SMPTe ST 2059

**IP BENEFITS**  
Simple system structure for UHD  
Full redundancy network  
Excellent program quality

**ON AIR DATE**  
October 2018



**CHASE CENTER**  
Californian, USA

**DESCRIPTION**  
Live Events Venue and Home of the Golden State Warriors

**IP TECHNOLOGY**  
SMPTe ST 2110 Live Production  
All 2110, 1080p today  
UHD+HDR+HFR capable

**IP BENEFITS**  
Flexibility to take any signal in Guaranteed interoperability

**ON AIR DATE**  
August 2019



**DOMESTIC PRODUCTIONS**  
Toronto, Ontario, Canada

**DESCRIPTION**  
Dome Productions 'GATEWAY'  
Large scale multi-format mobile production facility for sports and entertainment.

**IP TECHNOLOGY**  
SMPTe ST 2110-20/30/40  
SMPTe ST 2022-7  
SMPTe ST 2059-2

**IP BENEFITS**  
System Flexibility  
Network Redundancy  
Non-blocking system scale

**ON AIR DATE**  
January 2021



**EUROSPORT**  
20 locations throughout Europe

**DESCRIPTION**  
Merging Technologies' HAPI converters are interconnected in AES67 throughout Europe. Live sport commentaries in different languages are aired without compromise in high quality

**IP TECHNOLOGY**  
AES67 / SMPTe ST 2110-30

**IP BENEFITS**  
Flexibility and agility  
Easy local and remote expansion/scaling  
Low latency

**ON AIR DATE**  
January 2019



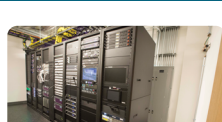
**KOREAN BROADCASTING SYSTEM**  
Seoul, Korea

**DESCRIPTION**  
2UHD studios and 2 signal control rooms (SCR) in the KBS new building. Each SCR backup each others and able to control both studios.

**IP TECHNOLOGY**  
SMPTe ST 2110 & AES67

**IP BENEFITS**  
Scale  
Interconnectivity between Studios

**ON AIR DATE**  
February 2018



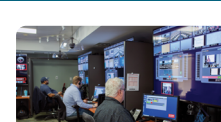
**LINKED IN**  
MULTI-CAMPUS PRODUCTION  
San Francisco/Mountain View/  
Bangalore/Dublin/Chicago/New York

**DESCRIPTION**  
Multiple production facilities which are interoperable, remotely managed and controlled. Control room which can produce shows from various venues

**IP TECHNOLOGY**  
SMPTe ST 2022-6 (currently)  
SMPTe ST 2110 / AES67 (2018)  
SMPTe ST 2059 (2018)

**IP BENEFITS**  
Long-term Infrastructure  
Format Flexibility

**ON AIR DATE**  
June 2016 - 2018 (various)



**NC STATE DELTA**  
North Carolina, USA

**DESCRIPTION**  
Distance Education and Learning Technology Applications

**IP TECHNOLOGY**  
SMPTe ST 2110  
SMPTe ST-2022-7

**IP BENEFITS**  
Density allows room to grow  
Guaranteed interoperability  
Designed for future-proofing

**ON AIR DATE**  
August 2019



**NDR ELBPILHARMONIE**  
Hamburg, Germany

**DESCRIPTION**  
Fully networked concert hall  
6 mixing desks  
15 stagebox units  
1 main router  
4000+ audio channels

**IP TECHNOLOGY**  
AES67

**IP BENEFITS**  
Flexible signal management  
Shared infrastructure  
Integrated access rights management

**ON AIR DATE**  
January 2017



**NEP BROADCAST SOLUTIONS**  
Singapore

**DESCRIPTION**  
Flyaway OB kits for Live Production for major sport event coverage.

**IP TECHNOLOGY**  
SMPTe ST 2022-6

**IP BENEFITS**  
Scale  
Flexibility

**ON AIR DATE**  
March 2017



**CLOUD PRODUCTION PLATFORM**  
The Netherlands

**DESCRIPTION**  
Centralized, shared production platform enabling productions across multiple locations

**IP TECHNOLOGY**  
SMPTe ST 2022-6

**IP BENEFITS**  
Better Equipment Utilization  
Reduced Travel Budget  
Flexibility

**ON AIR DATE**  
November 2015



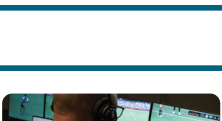
**THE HUB**  
Sydney and Melbourne, Australia

**DESCRIPTION**  
Two, centralised and resource sharing production centres, allowing for remote production from 29 country wide venues

**IP TECHNOLOGY**  
SMPTe ST 2110

**IP BENEFITS**  
Resource sharing  
Reduced Travel Budget  
Flexibility  
Anyone Anywhere on the network

**ON AIR DATE**  
March 2018



**THE HUB**  
Melbourne Park, Australia

**DESCRIPTION**  
Native 2110 IP commentary unit co-development with NEP based on the Merging Anubis platform

**IP TECHNOLOGY**  
SMPTe ST 2110-30 & NMOS

**IP BENEFITS**  
Seamless integration into native IP infrastructure

**ON AIR DATE**  
January 2022



**NFL**  
California, USA

**DESCRIPTION**  
Live Stadium Production and Studio Shows. Creating HD and Ultra HD Productions Simultaneously.

**IP TECHNOLOGY**  
SMPTe ST 2110  
Mix of UHD+HDR and HD

**IP BENEFITS**  
IP-to-IP Processing  
Non-blocking I/O for thousands of streams  
Guaranteed interoperability

**ON AIR DATE**  
August 2021



**PCCW NEWS NEWS**  
Hong Kong, China

**DESCRIPTION**  
IP infrastructure for 24 hours Live News Production

**IP TECHNOLOGY**  
SMPTe ST 2022-6 & AES67

**IP BENEFITS**  
Scale  
Flexibility

**ON AIR DATE**  
August 2018



**QVC**  
Chiba City, Japan

**DESCRIPTION**  
IP-based production system, including IP routing system, multiviewers, production switcher, and audio mixer

**IP TECHNOLOGY**  
SMPTe ST 2110

**IP BENEFITS**  
Flexibility and agility  
Open, interoperable  
Highly scalable

**ON AIR DATE**  
2018



**RAI WAY**  
Rome / Milano, Italy

**DESCRIPTION**  
IP transport, orchestration and monitoring of compressed / uncompressed video and audio services over a single converged network to regional headends and DTT towers in Italy.

**IP TECHNOLOGY**  
SMPTe ST 2022-6/7, SMPTe ST 2110, SMPTe ST 2059

**IP BENEFITS**  
Best-of-breed: DataMiner (Skyline) SDN control, Arista & Cisco switches, Imagine & Ensysys IP-gateways format agnostic, future proof  
Secure: geo-redundant, host and flow policy support

**ON AIR DATE**  
Q4 / 2022



**SHOP CHANNEL**  
Tokyo, Japan

**DESCRIPTION**  
We provide various programming to fit a wide range of viewer environments, CS broadcasts, cable TV, BS broadcasts, terrestrial digital broadcasts, IPTV, and 4K broadcasts.

**IP TECHNOLOGY**  
SMPTe ST 2110-20, 30, 40  
SMPTe ST 2022-7

**IP BENEFITS**  
Ensuring redundancy with seamless protection switching. (Hitless)

**ON AIR DATE**  
2021



**SKY**  
Milan, Italy

**DESCRIPTION**  
Large-scale audio/video routing system in a hybrid SDI/IP environment

**IP TECHNOLOGY**  
SMPTe ST 2022-6/7

**IP BENEFITS**  
Flexible routing ecosystem  
Open, interoperable  
Highly scalable

**ON AIR DATE**  
February 2017



**SHANGHAI MEDIA GROUP**  
Shanghai, China

**DESCRIPTION**  
UHD OB track

**IP TECHNOLOGY**  
SMPTe ST 2110 & AES67

**IP BENEFITS**  
Scale  
Flexibility

**ON AIR DATE**  
May 2018



**SRF**  
Zurich, Switzerland

**DESCRIPTION**  
New Technology-Building on a greenfield approach without SDI. Full SMPTe ST 2110 based on 100G Leaf-Spine backbone

**IP TECHNOLOGY**  
SMPTe ST 2110  
SMPTe ST 2059  
IS-04  
IS-05

**IP BENEFITS**  
One common backbone throughout the complete building. Flexibility, scalability, future-proof and format agnostic

**ON AIR DATE**  
June 2022



**SRF**  
Zurich, Switzerland

**DESCRIPTION**  
Full SMPTe ST 2110 uncompressed based HD/UHD, SDR/HDR 24 camera OB-Van

**IP TECHNOLOGY**  
SMPTe ST 2110  
SMPTe ST 2059

**IP BENEFITS**  
Format agnostic  
Scalable  
Flexible

**ON AIR DATE**  
October 2018



**PROGRESSIVE**  
Cleveland, Ohio USA

**DESCRIPTION**  
Telos Alliance partners with Progressive American Flat Track to streamline live event Comms saving them money and time.

**IP TECHNOLOGY**  
Telos Infinity IP Intercom

**IP BENEFITS**  
Infinite scalability with plug and play device integration  
No matrix with an all-IP backbone for dramatic efficiencies  
Easy to use with intuitive UI for simple operation  
Cost-efficient with a lower total cost of ownership compared to traditional intercom systems

**ON AIR DATE**  
June 2020



**TENNIS CHANNEL**  
Santa Monica, California USA

**DESCRIPTION**  
IP playback and production infrastructure at new master control center

**IP TECHNOLOGY**  
SMPTe ST 2110

**IP BENEFITS**  
Smaller hardware footprint  
Simplified architecture, easier operations  
Increased flexibility and agility  
4K and HDR UHD support

**ON AIR DATE**  
December 2020



**TENCENT VIDEO**  
Beijing, China

**DESCRIPTION**  
Full IP 4K UHD OB Van

**IP TECHNOLOGY**  
SMPTe ST 2022-6/7, TICO

**IP BENEFITS**  
Scale  
Scalability  
Flexibility

**ON AIR DATE**  
December 2016

